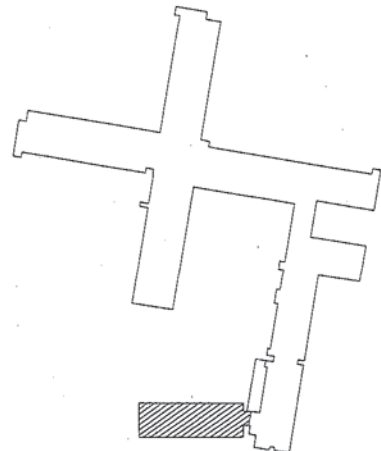
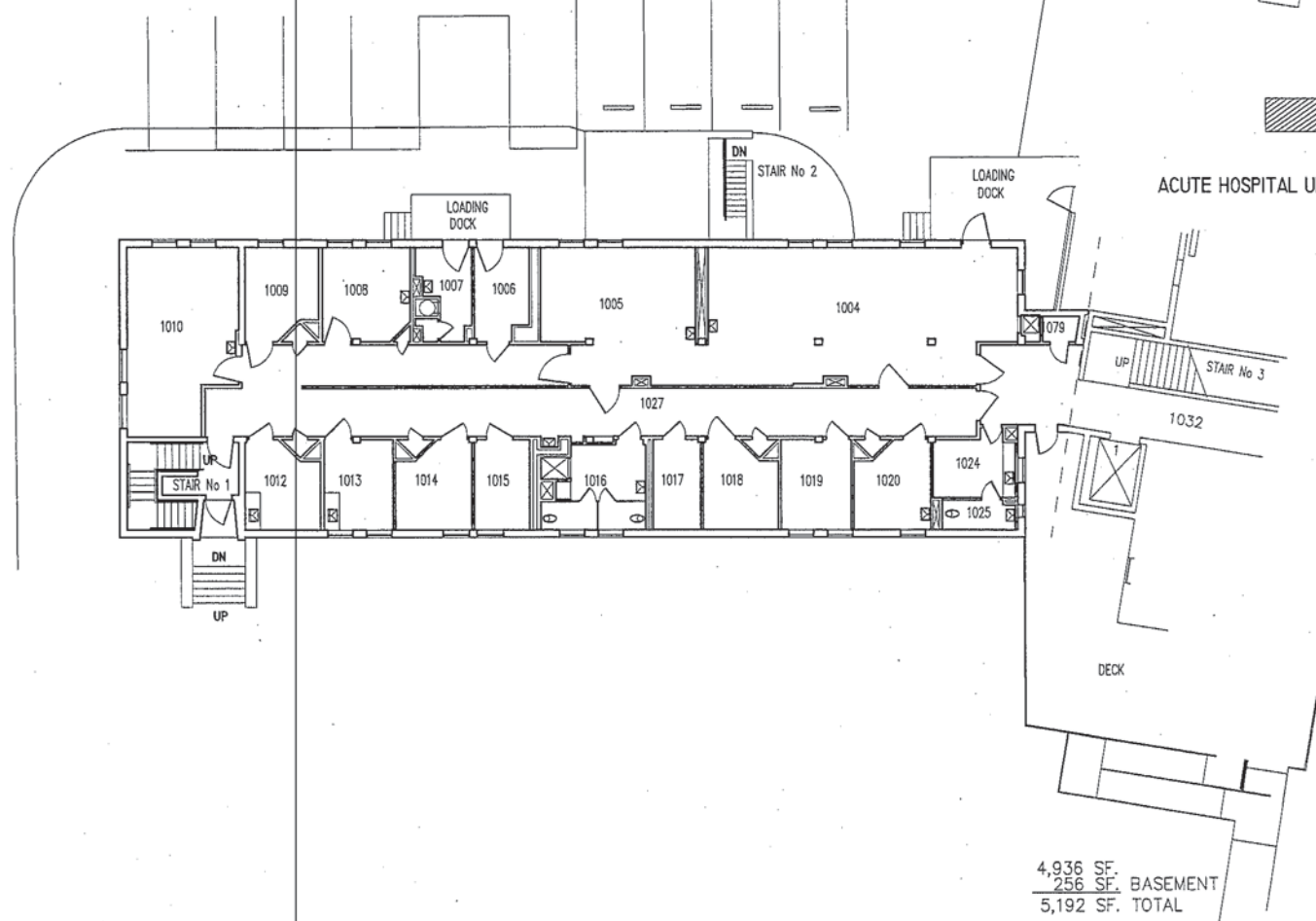


BASEMENT-MECH. ROOM



ACUTE HOSPITAL UNIT LOCATION MAP



4,936 SF.  
256 SF. BASEMENT  
5,192 SF. TOTAL

Cal Poly Pomona Campus South  
HOSPITAL EXTENSION FIRST FLOOR, PHYSICAL THERAPY

SCALE: 1" = 24'-0"

3 / 2010  
JUAN BAIRES-ADAIR, AIA